

Name: _____

DIRECTIONS: Write a descriptive sentence for each of the pictures below.



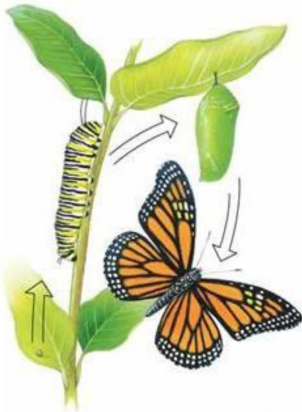
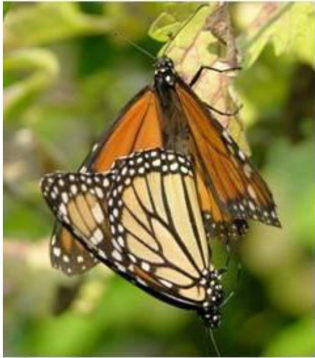
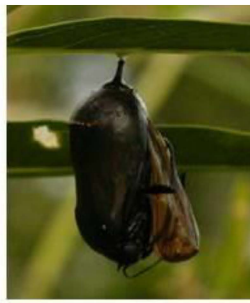












DIRECTIONS: Match the sentences below with the pictures to which they best relate. Write the letter on the line next to each picture.

- A. When magnified, the monarch butterfly's egg shows the ridges that run along its sides.
- B. Look at all of those monarchs together on that branch!
- C. Can you believe how tiny the monarch's egg is?
- D. The adult monarch will nectar on many flowering plants.
- E. Feeding on the leaves of milkweeds, the brightly colored caterpillar seems to have no fear of being preyed upon.
- F. Many monarchs will be attracted to a clover plant in full bloom.
- G. Come quickly! The butterfly is emerging from its chrysalis!
- H. Complete metamorphosis in insects, like butterflies, consists of four stages; egg, larva, pupa and adult.
- I. When mating, two butterflies will join at the abdomen.